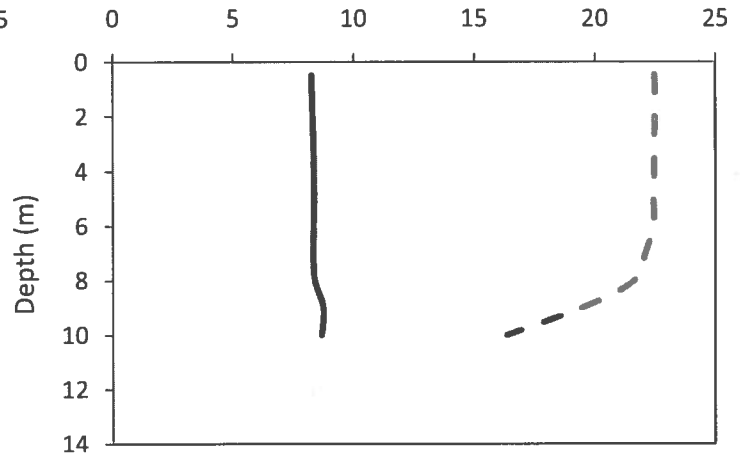
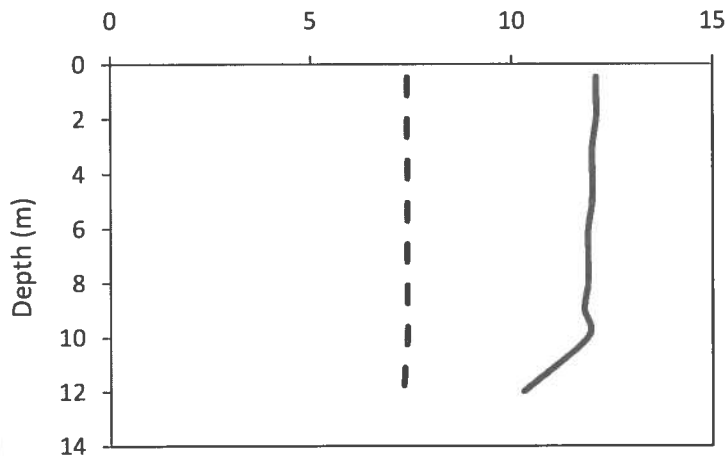


## Lake Joseph – Cox Bay

Municipality:	Muskoka Lakes	Watershed:	Lake Joseph/Lake Rosseau
Surface Area:	1.84 km <sup>2</sup>	Watershed Area (excluding lake):	4.6 km <sup>2</sup>
Maximum Depth:	12 m	Cold Water Fishery?	Yes
Wetland Area:	4.07 %	Secchi Depth (10-year average):	5.5 m
Phosphorus (10-year average 1999-2008):	5.5 µg/L	Sensitivity:	Moderate (OT)

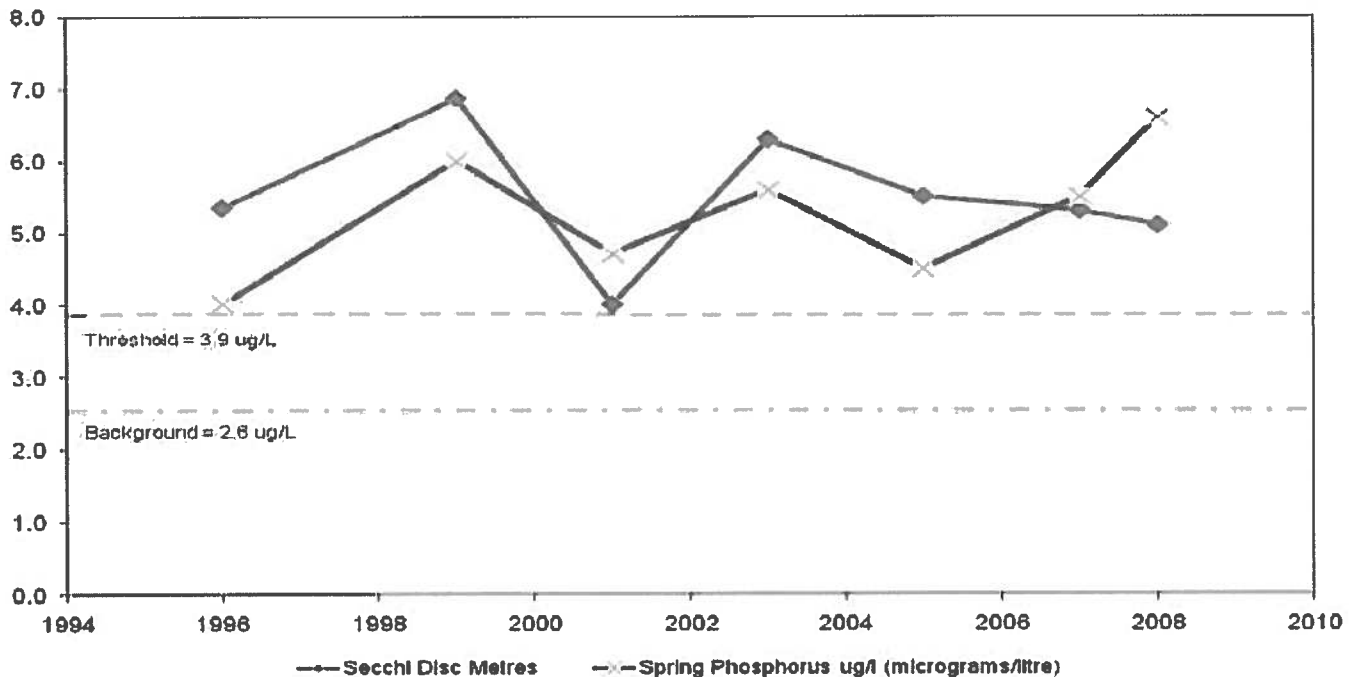
May 2008

August 2008



-- Temperature (°C)    — Dissolved Oxygen (mg/L)    -- Temperature (°C)    — Dissolved Oxygen (mg/L)

### Lake Joseph - Cox Bay Long Term Monitoring Data



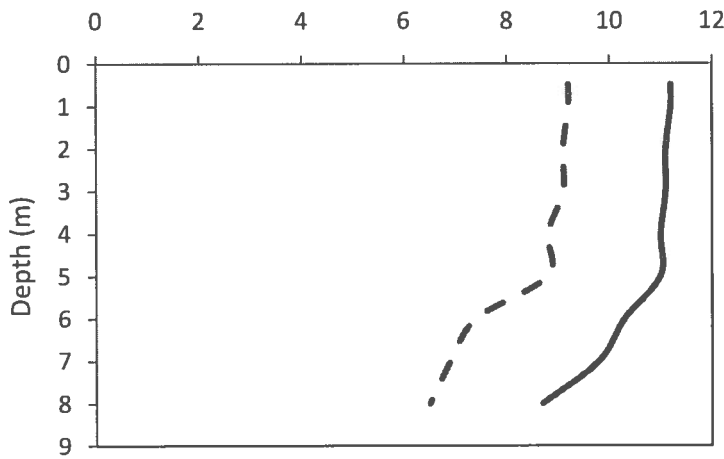
This information is supplied without expressed or implied warranty of any kind, including warranty of fitness for a particular purpose. In no event will the District Municipality of Muskoka be liable for any damages, whether incidental, consequential or direct in conjunction with, or arising from the furnishing or use of this information.



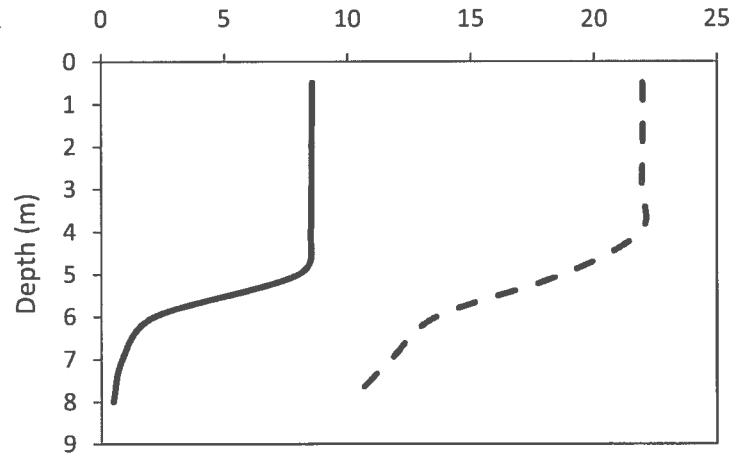
# Lake Joseph – Joseph River

Municipality:	Muskoka Lakes	Watershed:	Lake Joseph/Lake Rosseau
Surface Area:	1.37 km <sup>2</sup>	Watershed Area (excluding lake):	7.93 km <sup>2</sup>
Maximum Depth:	8 m	Cold Water Fishery?	Yes
Wetland Area:	5.73 %	Secchi Depth (10-year average):	3.8 m
Phosphorus (10-year average 1999-2008):	8.5 µg/L	Sensitivity:	Moderate

May 2008

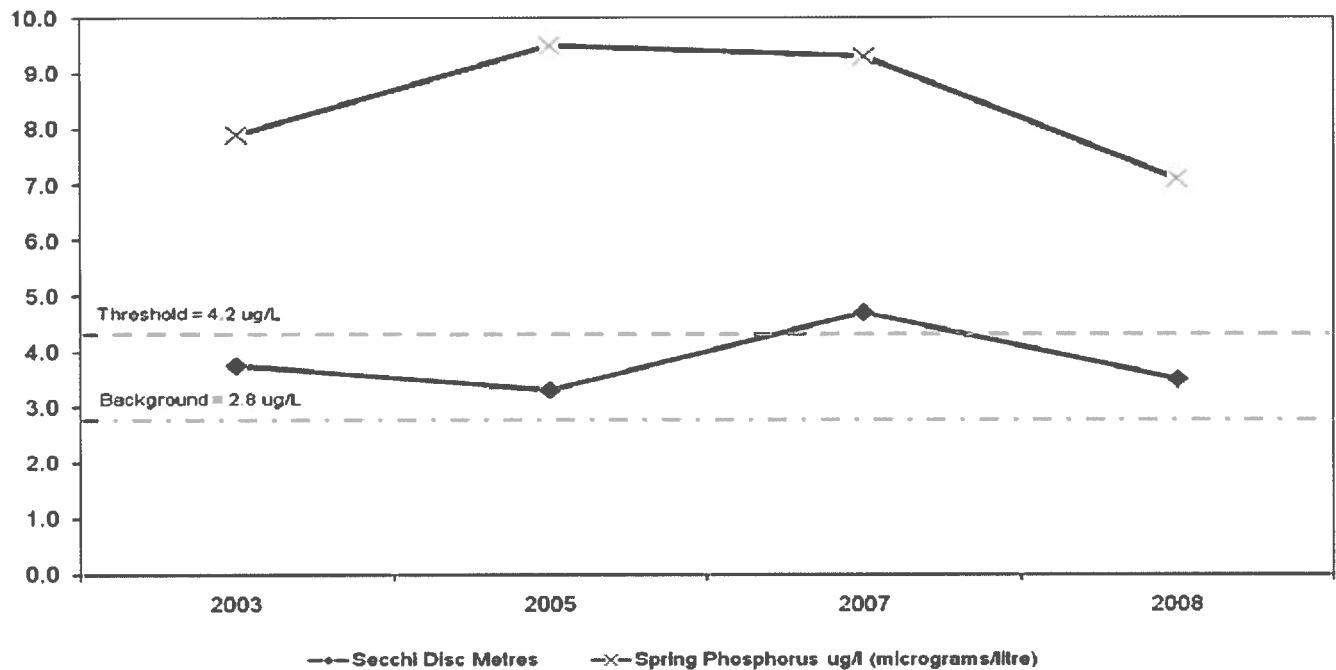


August 2008



--- Temperature (°C)    — Dissolved Oxygen (mg/L)    --- Temperature (°C)    — Dissolved Oxygen (mg/L)

## Joseph River Long Term Monitoring Data



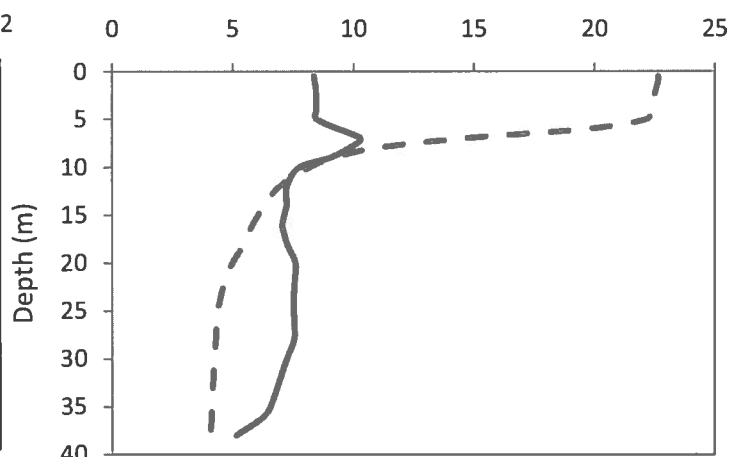
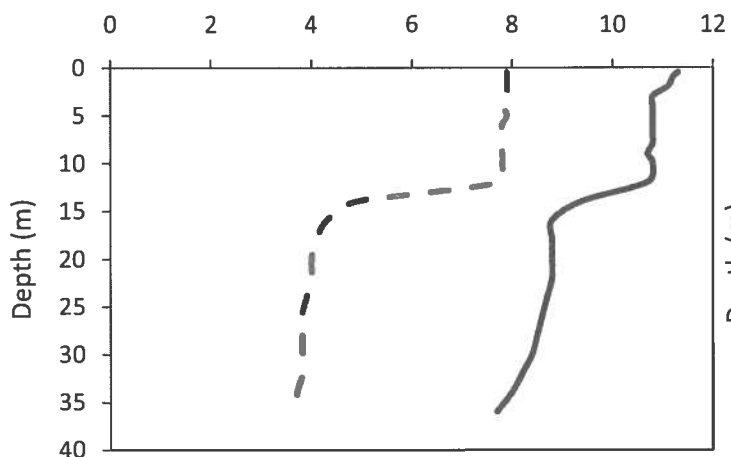
This information is supplied without expressed or implied warranty of any kind, including warranty of fitness for a particular purpose. In no event will the District Municipality of Muskoka be liable for any damages, whether incidental, consequential or direct in conjunction with, or arising from the furnishing or use of this information.

## Lake Joseph – Little Lake Joseph

Municipality:	Seguin	Watershed:	Lake Joseph
Surface Area:	2.8 km <sup>2</sup>	Watershed Area (excluding lake):	6.5 km <sup>2</sup>
Maximum Depth:	40 m	Cold Water Fishery?	Yes
Wetland Area:	4.96 %	Secchi Depth (10-year average):	4.9 m
Phosphorus (10-year average 1999-2008):	5.9 µg/L	Sensitivity:	Moderate

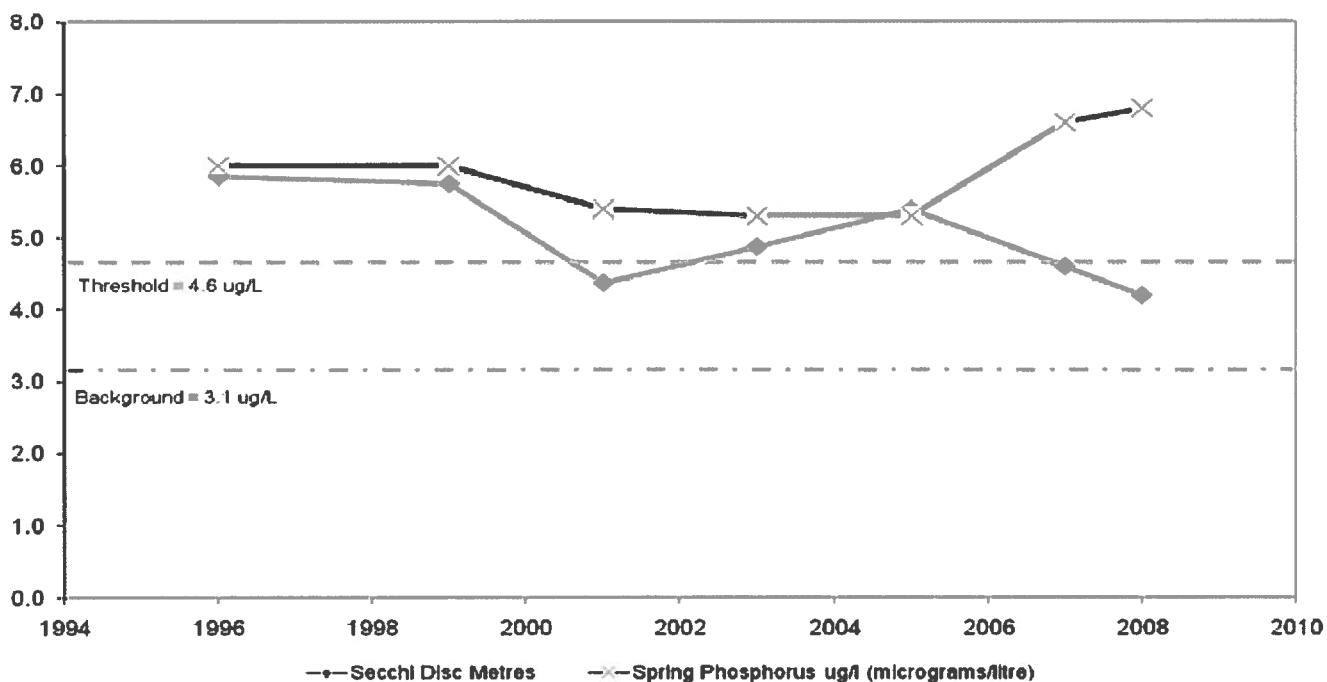
May 2008

August 2008



--- Temperature (°C)    — Dissolved Oxygen (mg/L)    --- Temperature (°C)    — Dissolved Oxygen (mg/L)

### Little Lake Joseph Long Term Monitoring Data



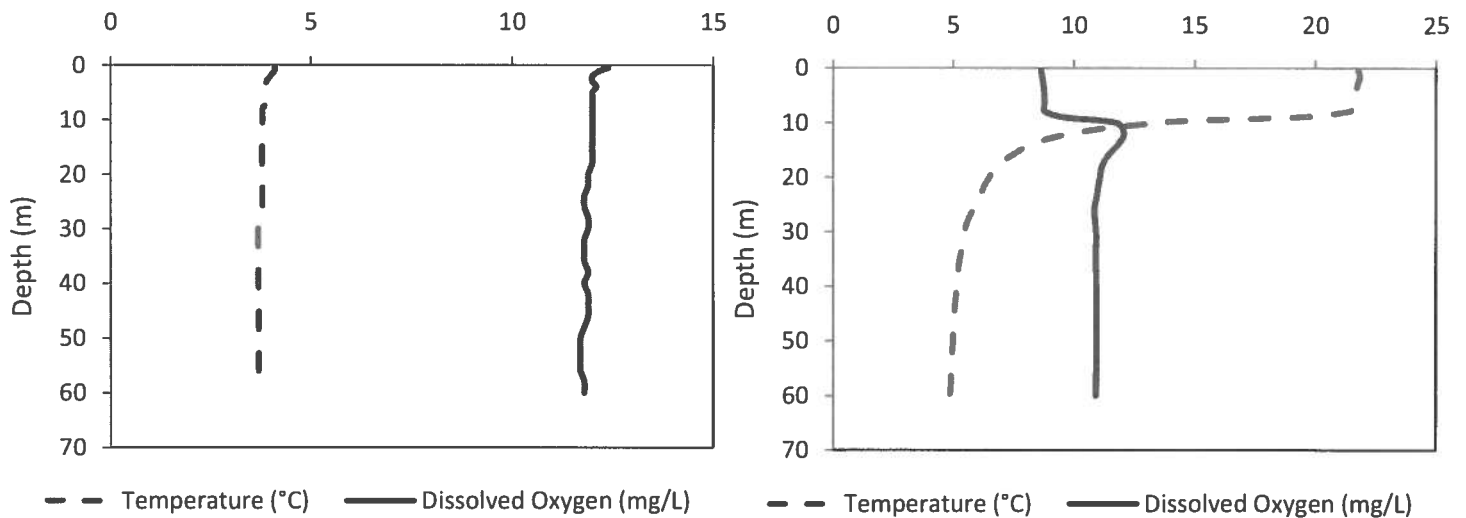
This information is supplied without expressed or implied warranty of any kind, including warranty of fitness for a particular purpose. In no event will the District Municipality of Muskoka be liable for any damages, whether incidental, consequential or direct in conjunction with, or arising from the furnishing or use of this information.

# Lake Joseph – Main

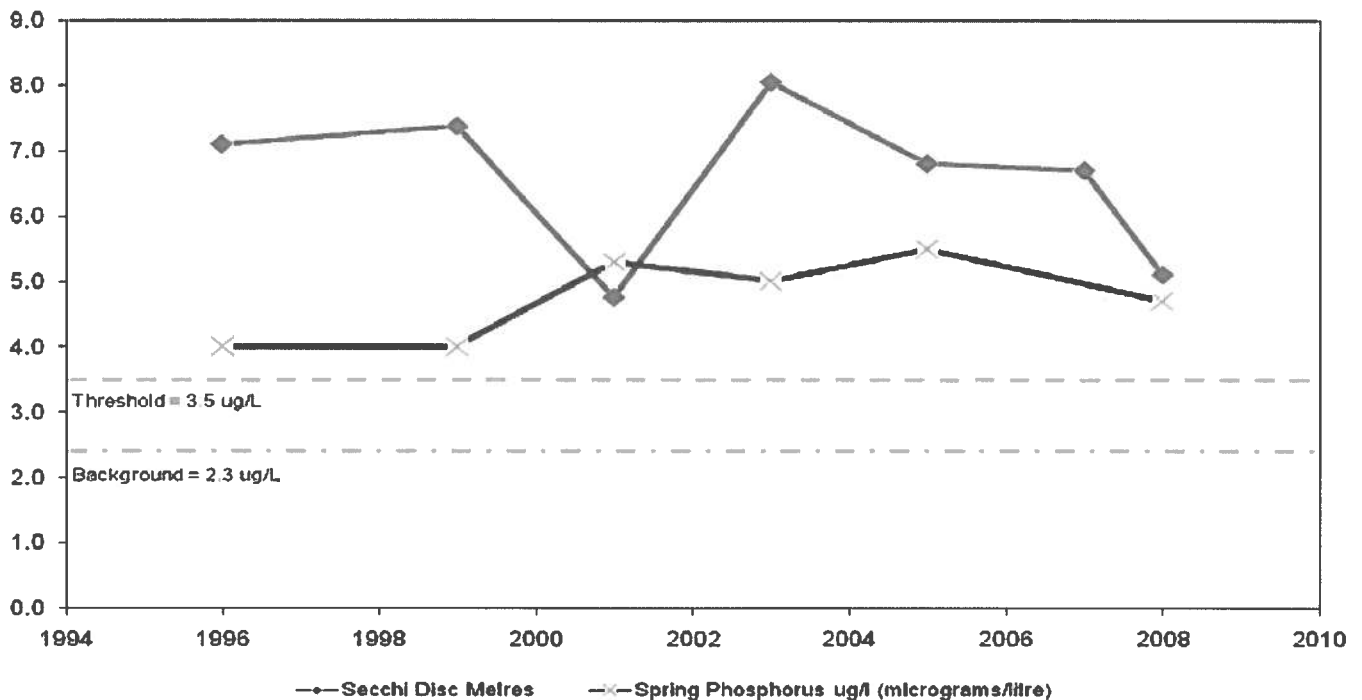
Municipality:	Muskoka Lakes	Watershed:	Lake Joseph
Surface Area:	50.89 km <sup>2</sup>	Watershed Area (excluding lake):	55.0 km <sup>2</sup>
Maximum Depth:	60 m	Cold Water Fishery?	Yes
Wetland Area:	5 %	Secchi Depth (10-year average):	6.5 m
Phosphorus (10-year average 1999-2008):	4.9 µg/L	Sensitivity:	High

May 2008

August 2008

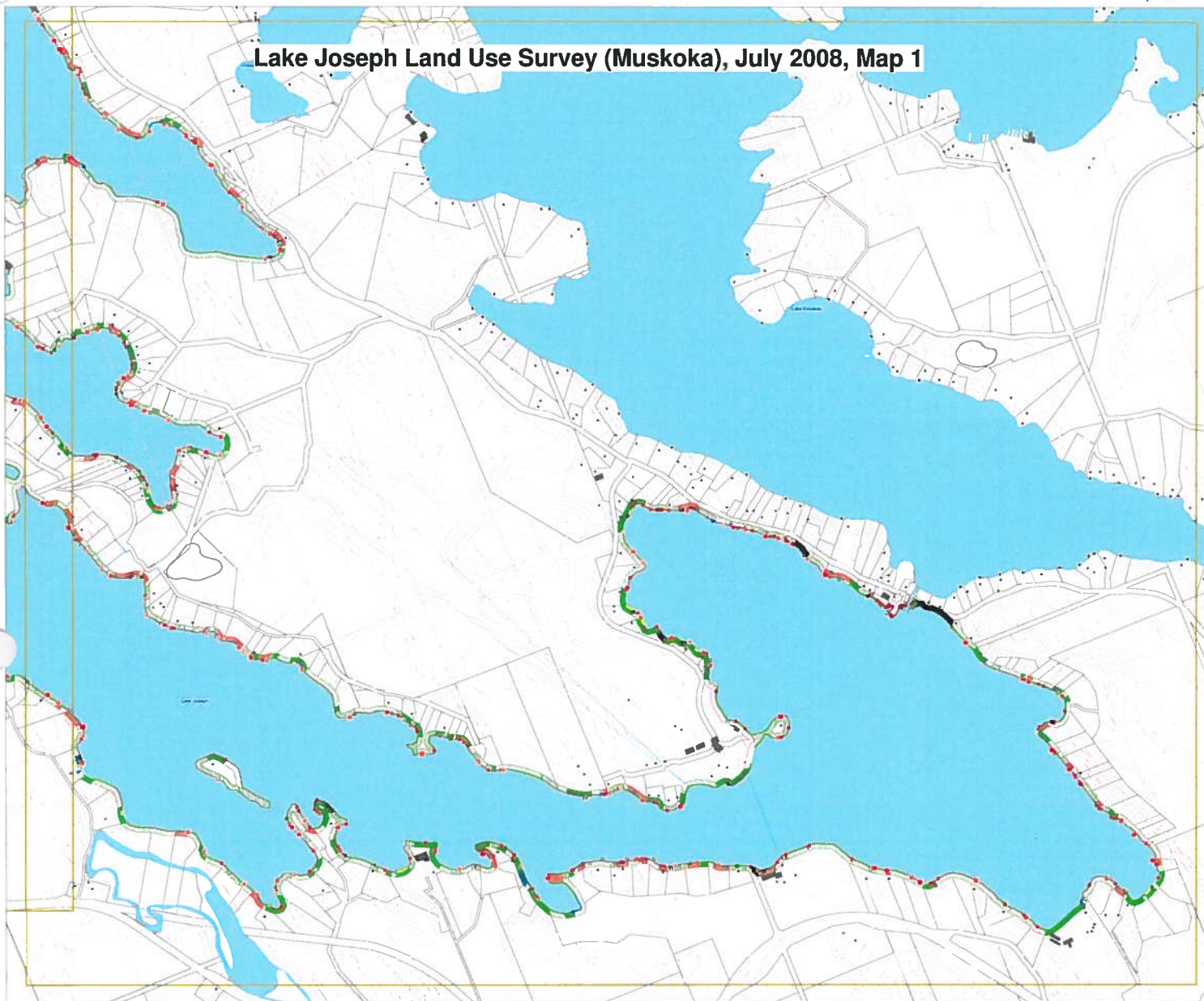


## Lake Joseph - Main Long Term Monitoring Data

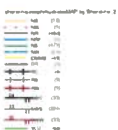


This information is supplied without expressed or implied warranty of any kind, including warranty of fitness for a particular purpose. In no event will the District Municipality of Muskoka be liable for any damages, whether incidental, consequential or direct in conjunction with, or arising from the furnishing or use of this information.

# Lake Joseph Land Use Survey (Muskoka), July 2008, Map 1



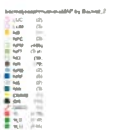
**Legend**



**Shoreline Length and Percentages**

Shoreline Type	Length (km)	Percentage
Water	91.17	2.80
Rock	1.42	0.04
Gravel	75.36	2.30
Sand	1.42	0.04
Shingle	285.75	8.79
Clay	486.82	14.81
Loam	1423.54	43.68
Forest	101.91	3.10
Open	45.43	1.39
Grass	4.11	0.12
Barren	44.83	1.38
Other	2888.24	88.72
Total	3270.00	100.00

**Legend**



**Backlot Area and Percentages**

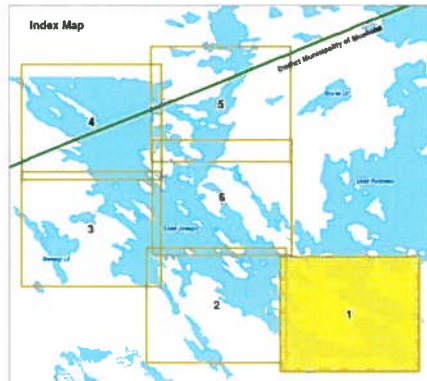
Backlot Type	Area (ha)	Percentage
Water	1.12	0.03
Rock	1.12	0.03
Gravel	1.12	0.03
Sand	1.12	0.03
Shingle	1.12	0.03
Clay	1.12	0.03
Loam	1.12	0.03
Forest	1.12	0.03
Open	1.12	0.03
Grass	1.12	0.03
Barren	1.12	0.03
Other	1.12	0.03
Total	3270.00	100.00

**Legend**



**Structure Count**

Structure Type	Count
Water	1
Rock	1
Gravel	1
Sand	1
Shingle	1
Clay	1
Loam	1
Forest	1
Open	1
Grass	1
Barren	1
Other	1
Total	1



**THE DISTRICT OF MUSKOKA**

Map 1 of 6

Copyright © 2008, The District of Muskoka. All rights reserved. This map is a reproduction of the original map. No part of this map may be reproduced, stored in a retrieval system, or transmitted in any form or by any means, electronic, mechanical, photocopying, recording, or by any information storage and retrieval system, without the prior written permission of The District of Muskoka.



